

9. ABOUT US

Driven by the passion for innovation, we at Dr Trust endeavour to provide our customers with the latest medical inventions with an objective to promote good health and wellness all around the world. All the medical devices and health monitors provided by Dr Trust are supported by accurate, latest and ground breaking technologies, innovated at our headquarters in NY, USA. All our products adhere to the most stringent CE and FDA guidelines and are strongly recommended by doctors and health practitioners. Our products are designed in the utmost exemplary ways to ensure that their accuracy and convenience are unrivalled. The ease of their use and operation makes them even more suitable for users of all age groups.

Dr Trust strives to enhance the quality of lifestyle by providing with the most trusted and innovative health care and wellness products. Being a renowned global leader in health care products, Dr Trust ensures that our technically efficient team works dynamically and tirelessly to provide the best of the medical devices to our clients. The products that we have to offer are suitably designed for use at homes, laboratories and hospitals.

Our ground breaking solutions allow you to monitor your health in the easiest ways possible. In today's era when all of our lives are too hassled to handle, it becomes a bit difficult to pay attention to our health. But it has now become easier with the coming of the monitoring devices which can be conveniently used at homes and even on the go.

We bring to you a variety of best self medical devices, trusted and used by Doctors, medical professionals and home users all over the world.



3-IN-1 NANO IONIC FACIAL STEAMER Humidifier and Towel Warmer



**USER
INSTRUCTIONS**

Thank you for purchasing Dr Trust 3-in-1 Nano Ionic Facial Steamer, Humidifier and Towel Warmer . Please read the instructions before use.

1. INTRODUCTION	3
2. BODY PARTS IDENTIFICATION	3
3. IMPORTANT SAFEGUARDS	4
● To Reduce The Risk Of Electric Shock	
● To Reduce The Risk Of Injury	
● Do Not Operate The Unit	
● Do's And Dont's To Protect The Dr Trust 3-In-1 Nano Ionic Facial Steamer	
● Do Not Use The Dr Trust 3-In-1 Device In The Conditions	
4. OPERATING INSTRUCTIONS	7
5. USAGE	8
6. SPECIFICATIONS	11
7. CARE & MAINTAINANCE	12
8. CUSTOMER SUPPORT	13
9. ABOUT US	14

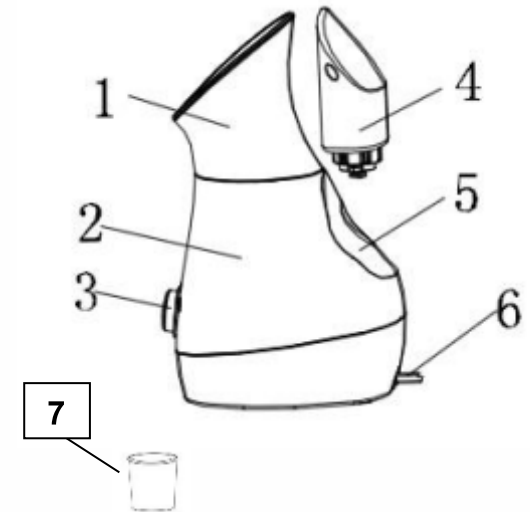
Dr Trust 3-in-1 Nano Ionic Facial Steamer sets the skin for exfoliation and to have the maximum benefits of other targeted treatments. It infuses the skin with moisture and opens pores to make it more receptive to active ingredients. It allows better penetration of these ingredients deep into the skin for better results.

Once again we thank you for your purchase and hope you enjoy the best results of this 3-in-1 system.

The safety precautions provided here will help you with the correct and safe operation of this appliance, so that you may avoid injuries to yourself and others or damage to property and the device.

2. BODY PARTS IDENTIFICATION

- 1.Steamer Head
- 2.Steamer Body
- 3.Rotary Switch
- 4.Water Tank
- 5.Water Reservoir
- 6.Power Line
- 7.Beaker





PRODUCT PIC

3. IMPORTANT SAFEGUARDS

When using the Dr Trust 3-in-1 Nano Ionic Facial Steamer, Humidifier and Towel Warmer, some basic safety precautions should always be followed to reduce the risk of electric shock and injury;

TO REDUCE THE RISK OF ELECTRIC SHOCK

- Do not use it while bathing.
- Do not use this product near a sink, or any vessel containing water.
- Do not place it into water or any other liquid.
- Do not reach for a unit that has fallen into water.
- Do not use the appliance with wet hands.

- Unplug immediately if it has been dropped into the water or any other liquid.
- Plug-in correctly to corresponding power source.

IMPORTANT: Always switch off and unplug the appliance immediately after using it.

TO REDUCE THE RISK OF INJURY

- Do not leave the appliance unattended when in use.
- Do not allow children to operate it.
- Do not use it outdoor.
- The 3-in-1 device should be used only for its intended purpose as described in this manual.
- Do not use attachments that are not recommended in the manual

IMPORTANT: Always ensure the appliance is operated on an electric power source matched to the rated voltage indicated on the appliance. Ensure that the power source and appliance plug both are plugged in correctly.

DO NOT OPERATE THE UNIT

- If it has a damaged cord or plug.
- If it is not working properly.
- If it has been dropped or damaged.
- If its air vents are not working properly or blocked by lint and hair, etc.
- If the cord or plug becomes hot.
- If it is not plugged-in correctly.

DO'S AND DONT'S TO PROTECT THE DR TRUST 3-IN-1 NANO IONIC FACIAL STEAMER



- Do not damage, modify, unreasonably bend, pull or twist the cord.
- Do not place anything heavy on the cord and do not pinch the cord.
- Do not let pins or dirt get attached to the end of the appliance plug. Doing so may result in fire, electric shock, short circuit, burns or scalding.
- Do not use or store the appliance in the bathroom or in any other area with high humidity.
- Do not place the appliance where it may get wet.
- Do not allow infants to reach the appliance.
- Do not allow a child to lick the appliance or its plug.
- Do not use the appliance near flammable substances like (alcohol, thinner, benzene enamel remover, aerosol sprays, etc.
- Do not drop or insert any object into any opening.
- Always place it in a location that is out of the reach of infants.
- Use the water supply tank to supply water to the appliance, and make sure that the appliance and the power switch do not get wet when filling the water tank.
- Keep away from heated surfaces.



DO NOT USE THE DR TRUST 3-IN-1 DEVICE IN THE CONDITIONS

- When you are pregnant or currently in a menstrual period as it may cause skin problems due to hormone imbalance.
- When you are unable to feel heat.
- If you have allergies.
- If you are a person with skin diseases, atopic dermatitis or sensitive skin.
- If you have skin injuries, eczema, swelling, etc.

4. OPERATING INSTRUCTIONS

PLACING THE UNIT SAFELY

- Take out the Dr Trust 3-in-1 Nano Ionic Facial Steamer from box and place it on a flat, level and solid surface, such as a desk, etc.
- Do not hold the appliance in your hands during use.

FILLING THE WATER SUPPLY TANK

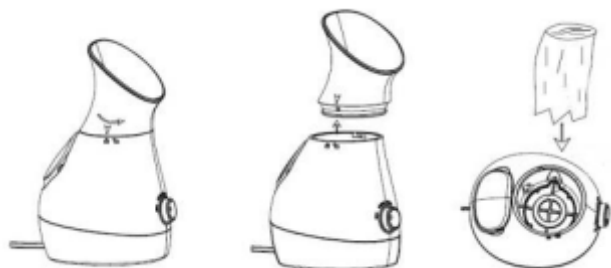
- Pull up the water tank from the main unit.
- Turn and open the water supply cap.
- Fill up the water tank with distilled water, purified or tap water only and close the water supply cap.
- Put the water tank into the water reservoir.
- Wipe away any water on the surface of the water supply tank.

IMPORTANT: Always turn off the power when adding water in the tank.

5. USAGE

HOW TO USE WARM TOWEL

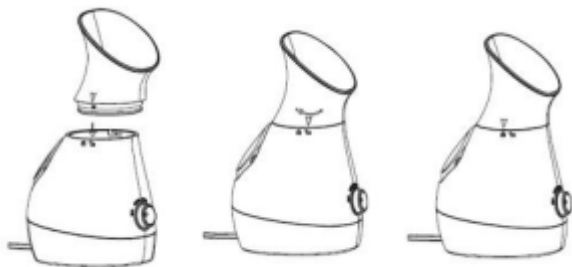
Rotate the steamer head counter-clockwise, and let the arrow come to the unlocking position and then remove the head. (Refer to the picture given below)



Picture 2

IMPORTANT:

- Turn off the power before removing the head and make sure the body has cooled down.
- Fold a wet cotton small face towel neatly and put it into the steamer body.
- Rotate the steamer head to locking position. (Refer to the picture given below)



Picture 3

- Plug in and then rotate the switch to the warm towel position and it will be warm after 2 minutes.
- Pick the towel up with forceps as it may be very hot. You must shake the towel several times and then use it at the comfortable temperature on your face.

HOW TO USE IT AS A STEAMER

1. Plug in the device into the power outlet.
2. Rotate the switch to turn on the appliance and set to your intended use (Warm Towel, Facial Steamer or Humidifier).

- The light around the switch will turn to blue.
- The steam is released after about 1 minute.

DIRECT THE STEAM TO YOUR FACE.

- Keep your face at least 25 cm (10") away from the nozzle. (Refer to picture 4).
- When using the appliance for the first time, feel the steam temperature at 25 cm, far enough from the steam outlet by hand, and then move your face to the proper position for steaming. (refer to picture)
- To ensure that the steam covers your entire face, direct the steam to the top of your chin.

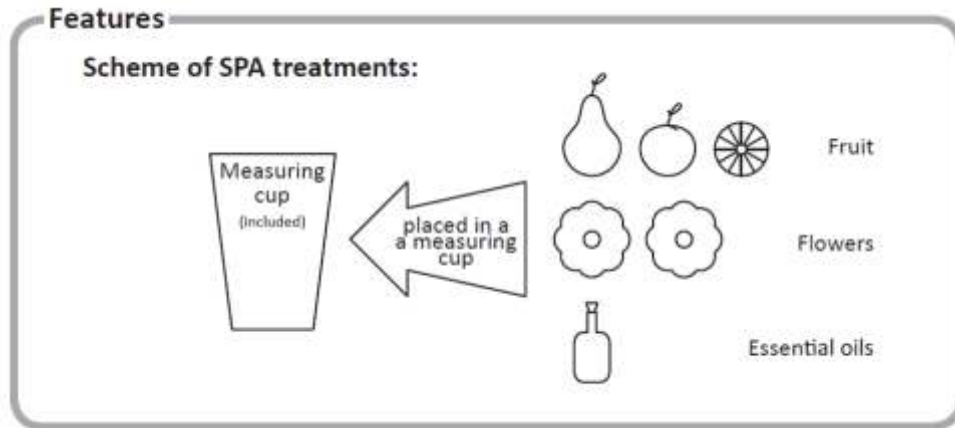


Picture 4

USING FRUIT SAUNA FUNCTION



Give your skin fruit and vegetable care to make it more healthy and glowing.



- Take out the steam head.
- Put some vegetables, fruits, essential oils and herbs etc. into the beaker (either in solid or liquid form).
- Place the beaker into the hollow space inside of the unit.
- Insert the plug and lock steam head.
- Turn the knob to steam mode and enjoy steaming your face.



Picture 5

USE IT AS AIR HUMIDIFICATION



- This machine can also be used in the dressing room, bedroom or small area as a humidifier in short time. Just put the water tank filled with water when using, and then rotate the switch to humidifier position.

- Full water tank can deliver hot steam for 30 minutes.

IMPORTANT: Turn the rotary switch off position after use.

6. SPECIFICATIONS

Model No: DRFS01

Power Source: 220 V, 50 Hz

Power Consumption: 600 W

Steam Discharge Rate Approx.: 13-14g/min at warm towel and facial steamer function, 6-7g/min at humidifier function.

Steam Temperature Approx.: 43 °C (107 °F) (at a distance of approx. 25 cm (10") from the edge of the nozzle)

Preheating Time: 25 Seconds

Unit Size: 175*151*290 mm

Net Weight: 0.8/1.1 Kgs

Attached Tank Capacity: 200 ml

Attachment: Beaker

Work Timings: 15 minutes for Warm Towel or Facial Steam; 30 minutes for Humidifier.

7. CARE & MAINTENANCE



Clean inside the main unit once a month to prevent water scale deposits, mineral build up and bad smelling steam.

We recommend you to follow the below procedure for cleaning:

- Mix a solution of 50% vinegar and 50% water and add them into water tank, and then heat up for 15 minutes.
- Remove the plug, water tank and also the steamer head, and pour clean water into the Steamer body inner cavity, pour out after cleaning. Refer to picture 6.



Picture 6

IMPORTANT: Ensure Your Safety

- Always unplug while cleaning and maintaining. Failure to do so may result in accident, electric shock or injury.
- Periodically clean to ensure dust does not accumulate on the appliance plug as it may cause the insulation to fail.
- When storing, do not wrap the power cord around the appliance. Doing so may cause deformation of the cord, and appliance failure.
- Always use the power cord specific to the appliance. In addition, do not use the power cord with any other appliance.

8. CUSTOMER SUPPORT



CONTACT ADDRESS

USA

NURECA INC.USA

276 5th Avenue, Suite 704-397, New York (NY) - 10001, USA

INDIA

Corporate Office (Mumbai)

Nureca Private Limited

#103/104, Orbit Plaza, New Prabhadevi Marg,
Prabhadevi, Mumbai, Maharashtra - 400025

Call On

USA: +1 212-634-4563

India (Toll free): 18002709565

Website: www.drtrustusa.com

Email: dr@drtrustusa.com

Connect with us on social networks

Facebook: @drtrust

Instagram: @drtrustisin

Youtube: NurecaUSA

COPYRIGHT© 2018 DR TRUST. ALL RIGHTS RESERVED