

14. ABOUT US

Driven by the passion for innovation, we at Dr Trust endeavour to provide our customers with the latest medical inventions with an objective to promote good health and wellness all around the world. All the medical devices and health monitors provided by Dr Trust are supported by accurate, latest and ground breaking technologies, innovated at our headquarters in NY, USA. All our products adhere to the most stringent CE and FDA guidelines and are strongly recommended by doctors and health practitioners. Our products are designed in the utmost exemplary ways to ensure that their accuracy and convenience are unrivalled. The ease of their use and operation makes them even more suitable for users of all age groups.

Dr Trust strives to enhance the quality of lifestyle by providing with the most trusted and innovative health care and wellness products. Being a renowned global leader in health care products, Dr Trust ensures that our technically efficient team works dynamically and tirelessly to provide the best of the medical devices to our clients. The products that we have to offer are suitably designed for use at homes, laboratories and hospitals.

Our ground breaking solutions allow you to monitor your health in the easiest ways possible. In today's era when all of our lives are too hassled to handle, it becomes a bit difficult to pay attention to our health. But it has now become easier with the coming of the monitoring devices which can be conveniently used at homes and even on the go.

We bring to you a variety of best self medical devices, trusted and used by Doctors, medical professionals and home users all over the world.

Dr Trust[®]

Dr Trust[®]

ORAL IRRIGATOR PRO 315



**USER
INSTRUCTIONS**

Please Visit drtrustusa.com/315 for quick startup guide

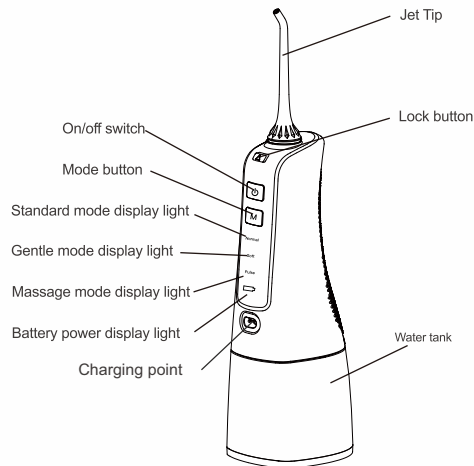
Thank you for purchasing the portable Dr Trust Oral Irrigator Pro- 315. Please take a moment to read this instruction manual thoroughly so that you can enjoy all the features that make it the best among most powerful flossers available in the market.

Product Introduction	3
Product Description	3
Product Accessories	4
Operating Procedure	4
Usage Instructions	6
Recommended Techniques	7
Battery Maintenance	8
Common Problems and Solutions	9
Customer Support	11
About Us	12

Traditional toothbrushes are unable to remove scraps of food or harmful bacteria that is deeply hidden in teeth. The Dr Trust Oral Irrigator Pro- 315 is designed to remove harmful bacteria hidden deep within dental cracks and the gum places which cannot be cleaned via brushing of the teeth alone. It can make contact with a limited area beneath the gum and use pulsing water flows to clean out harmful bacteria hidden in dental cracks and under the gum line. The device is equipped with an advanced water pressure control system that allows to personalize flossing experience. It is rechargeable through USB port and comes with an easy -to -fill removable 300ml water tank.

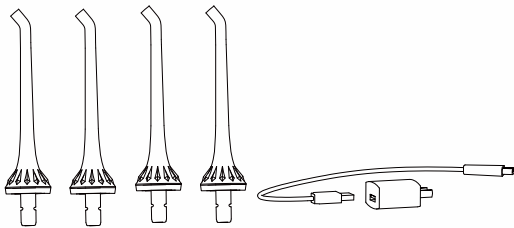
2. PRODUCT DESCRIPTION

The DrTrust Oral Irrigator Pro- 315 helps to get rid of plaque and debris between teeth and below the gum line. It always leaves your mouth feeling incredibly fresh and clean. Please see the pic below to know all about its body and key components.



3. PRODUCT ACCESSORIES

Dr Trust®



Standard jet tips x4

Power recharger

4. OPERATING PROCEDURE

Charging

Extremely important! Prior to using for the first time, please fully charge the device. Insert the USB plug into the power socket for a power supply. The charging indicator will light up. If the main unit is tilted or not in direct contact with the charger, the main unit may not charge properly. So, make sure to place the main unit upright. Charging is completed in about 4 hours, but the indicator light does not go off even when charging ends.

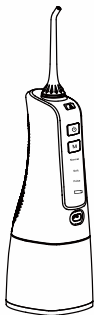
Note: -

Please do not use the irrigator during the power charging.

Always place the cord in the right, left or centre cord guide, depending on where the charger will be placed.

Always place the charger on a secure, level surface.

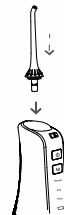
Disconnect the power plug after charging is completed.



Installation and Disassembly of Jet Tip

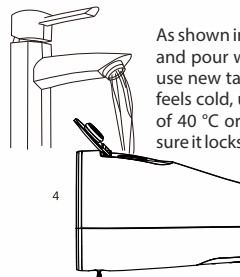
Dr Trust®

For attaching the nozzle firmly onto the main unit, please insert its tip into the spray head hole by screwing it in, until you hear a clicking sound.



Filling the Water Tank

As shown in diagram below, open the water tank lid and pour water into the water tank. Please always use new tap water or lukewarm water. If the water feels cold, use lukewarm water with a temperature of 40 °C or less. Close the water tank cap, making sure it locks in place after filling the tank.



Note:

Please ensure that when pouring water into the water tank, the device is switched off.

If changing or removing the jet tip, please press on the disassembly button on the jet tip handle before removing the jet tip.



5. USAGE INSTRUCTIONS

Dr Trust®

- This product has a memory function, and after switching it back on the water pressure mode will be the same as when the device was switched off.
- The standard, gentle and massage modes may be switched whether the device is ON or OFF.
- The modes may be changed when the device is switched off, and you can select the mode you like before switching the device back ON.
- Irrespective of the mode, after operating for 120 seconds the product will automatically switch off.
- When charging, the battery indicator flashes; when the battery indicator shows green and stops flashing, it indicates that the battery is fully charged.
- When the battery indicator flashes and displays red, it indicates that the battery is low and need immediate charging.
- If all three display lights are flashing, this indicates that the product's power is insufficient, and recharging is required.
- During charging this product cannot be used.
- Rotate the jet tip dial in order to adjust the water flow.



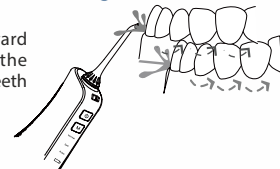
Cautions

- Do not put salt, mouthwash or other chemicals into the water tank. Doing so may cause malfunction.
- Do not dry the main unit with a dryer or a fan heater. Doing so may cause malfunction or deformation of the parts.
- Do not wipe with thinners, benzene, alcohol etc. Doing so may cause malfunction, cracking or discoloration of the parts.
- Store the appliance in a place with low humidity after use. Leaving the appliance in a bathroom may cause malfunction.

6. RECOMMENDED TECHNIQUES

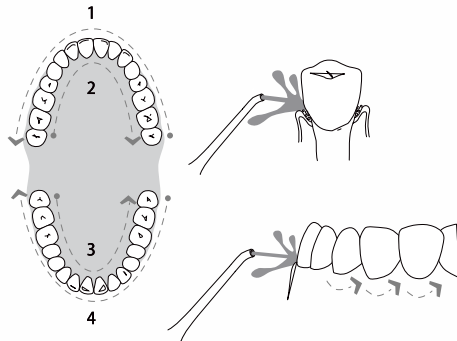
Dr Trust®

Holding the device at downward slant, position the jet tip in the mouth, and direct the jet tip at teeth before switching on the device.



When the water flow and the gums are at a 90-degree angle, slightly close your mouth in order to avoid the water spraying out and achieving the best results. Place the nozzle in your mouth and close your mouth gently before pressing the power switch.

Please first clench the teeth and begin to apply to the incisors. Slide the water flow along the gums, as well as pause briefly between teeth, until the area around the gums and the spaces between the teeth, until the area around the gums and the spaces between the teeth is fully cleaned.



To use, place your face over a washbasin, and with the main unit upright and the nozzle at the top, raise your elbow.

Pressing the mode switch during use will change the mode.

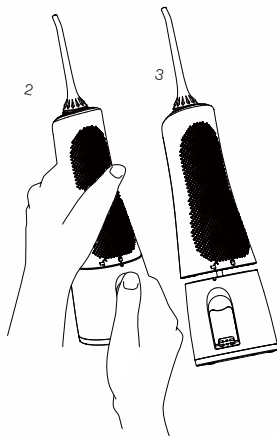
Following Usage

1. Please switch off the power, as well as empty the water tank.



2. Using both hands - use your left hand to hold the product body, and your right hand to hold the water tank. At the same time rotate downwards in an anti-clockwise direction, in order to remove the water tank.

Note: When pushing the tank up be careful with the handle.



7. BATTERY MAINTENANCE

- Prior to initial usage the battery must be fully charged, for approximately four hours.
- If to be used for a long period of time, please fully charge the device in advance.
- In order to maximize the usage life of the battery, please promptly recharge when power is insufficient.

8. COMMON PROBLEMS AND SOLUTIONS

Problems	Reason	Method of handling
Leakage of water between jet tip and screw part	The seal ring on the fixed socket for the jet tip is damaged, and the jet tip cannot be installed properly	Contact the retailer for repair, and install the jet tip properly
Water tank leaks water	Seal ring is loose	Re-install correctly
Inadequate pressure	Low voltage usage	Use after recharging
Device cannot be switched on	Low voltage usage	Use after recharging
Product is not discharging water	Filtration net is clogged	Clean the filtration net
Water tank sides are leaking water	Air entry hole is producing water	Standard phenomenon high air pressure principle.

Gentle Reminders:

1. At the time of initial usage, please select "gentle mode," in order to avoid the gums bleeding due to lack of adaption to usage. After consistent usage for two weeks there should be improvements. If bleeding is excessive or bleeding continues after two weeks, chronic gum inflammation could be an issue, and it is recommended that professional dental treatment be sought.

2. It is not recommended that the product be used by children, or people with dental implants, oral ulcers or open oral sores.

Note

When you use the water flosser for the first time, it causes gum bleeding as per the level of gingival sensitivity. So, it is recommended to start at a lower level to use the water flosser.

CONTACT ADDRESS**USA**

NURECA INC. USA

276 5th Avenue, Suite 704-397, New York (NY) - 10001, USA

INDIA**Corporate Office (Mumbai)****Nureca Private Limited**#103/104, Orbit Plaza, New Prabhadevi Marg,
Prabhadevi, Mumbai, Maharashtra - 400025**Call On****USA: +1 212-634-4563****India: +91-7527013265 / +91-9356658436****Website:** www.drtrustusa.com**Email:** customercare@nureca.com**Connect with us on social networks****Facebook:** @drtrust**Instagram:** @drtrustisin**Youtube:** NurecaUSA

COPYRIGHT© 2019 DR TRUST. ALL RIGHTS RESERVED